



14th PRAGUE FRINGE FESTIVAL Friday 22nd - Saturday 30<sup>th</sup> May 2015

## APPLICATION PACK FOR PERFORMERS

Thank you for your interest in applying for the 14th Prague Fringe Festival.

**Before submitting your application form it is really important that you read this pack to work out whether participation in Prague Fringe is right for your show and if the process is something you and your company will be able to commit to this year.**

**It contains essential information about the application process (dates/deadlines etc), technical and production details and important information about each venue, as well as the link to form itself.**

### Pack Contents:

HOW THE FESTIVAL WORKS: Applications, finances and practicalities

HOW THE FESTIVAL WORKS: Technical and Production

Venue Pack - Divadlo Na Prádle

Venue Pack - Malostranská beseda

Venue Pack - Divadlo Inspirace

Venue Pack - A Studio Rubín

Venue Pack - Divadlo Kampa

Venue Pack - Divadlo Na Prádle - Kavárna

Venue Pack - Museum of Alchemists

Venue Pack - Kavárna 3+1

Application form and contact details

You can also find general information for participating companies (FAQs and handy tips for marketing your show) which might help you to decide whether or not you want to apply on our website at: <http://www.praguefringe.com/en/right/participating-groups/>

We look forward to receiving your application!

Team Fringe



# 14th PRAGUE FRINGE FESTIVAL Friday 22nd - Saturday 30th May 2015

## HOW THE FESTIVAL WORKS: APPLICATIONS, FINANCES AND PRACTICALITIES

### Overview

Now in its 14th year, Prague Fringe Festival takes place annually in May in the Malá Strana or “Little Quarter” district on the castle side of the river. All the venues are within easy walking distance of each other. Over the nine day period, we take approximately 40 productions in 7/8 venues. In keeping with the standard Fringe format, each venue runs several performances each day with 30 minutes between each show to clear the audience, reset and seat a new audience. Although this seems a very short length of time, experience over 13 years has shown that even quite technically demanding shows are able to fit this time scheme. As we hope audience members will see several shows each night we schedule so you can see a show, have a beer, then go back for another show.

### Venues

We use a variety of venues ranging from a fully equipped proscenium arch theatre to the small backroom of a bar with domestic spotlights. The more you let us know about your show in the application form, the better we can help you find the right space. If you have absolute requirements it is important that you let us know so we can put you in an appropriate space.

Several companies perform in each venue daily, so facilities have to be shared; this means we sometimes alter the venues from their usual layout. Storage of sets, props and costumes can be an issue, so it is important that you tell us if you have large items.

Full technical and production specifics of all the venues can be found in the detailed Venue Information Packs included in this document.

### Key Dates in the Application Process (further explanation given below):

**23rd September 2014** closing date for submissions

**By 30 November 2014** result notifications sent to all applicants

**By 15 December 2014** contract, participation fee and programme copy/image due

### How it works:

- **Application Process** - upon consideration of your application, festival directors will contact you by the end of November to let you know whether or not your application has been successful. Our decisions are made on a number of grounds including but not exclusively:
  - Distribution of countries represented
  - Range of performance types (cabaret, text based, comedy etc)
  - Fit of shows to venues
  - Quality and detail of application
  - Technical practicality for our venues and if shows can work within the operating strictures of the festival
  - Limited choice of date/venue choices for us to work with in application
  - Detail of application
  - Balance of returning companies/shows to first time ones
- **Scheduling** - the festival is programmed ‘in rep’ giving companies a range of time slots from early afternoon to late evening.
- **Successful Applicants** – If you are selected to perform at the Prague Fringe you will be required to enter into a contract with Prague Fringe detailing dates, times, ticket prices etc. Your company will be charged a basic participation fee calculated by the venue and the number of performances you have requested (details below). Please note that these costs are per 60 minute performance slot used (i.e. 9 performances in our largest space: 9 x 2,900 CZK = 26,100 CZK etc.) This fee must be paid before the **15th of December**, including signed contract and photo and text for the brochure in order to guarantee your inclusion in Fringe 2015. (You will receive details of exactly how to pay and submit these items if your application is accepted.)

- **Summary of Venues:** – Please see the detailed Venue Information Packs in this document for more specific info

| Theatre                     | Capacity (seated) | Brief Summary of venue  | Fee per performance in CZK (approx EUR) |
|-----------------------------|-------------------|---|---|
| Divadlo Na Prádle           | 140               | Proscenium arch, raked seating, balcony, wing space   | 2,900 CZK (105 EUR)                     |
| Malostranská beseda         | 70                | Cabaret seating, raised proc arch stage, entrances at the back of the stage.  | 2,000 CZK (70 EUR)                      |
| Divadlo Inspirace           | 60tbc             | Raked seating, end-on to audience, multiple entrances through blacks, wing space. <i>NB: Redeveloped in 2014, exact details TBC</i> | 1,900 CZK (68 EUR)                      |
| A Studio Rubín              | 60                | Raked seating, end-on to audience, flexible seating, 2 entrances at back of stage.  | 1,900 CZK (68 EUR)                      |
| Divadlo Kampa               | 58/68             | Raked seating, end-on to audience, several entrance options through blacks, wing space.   | 1,900 CZK (68 EUR)                      |
| Divadlo Na Prádle - Kavárna | 50                | Cabaret style seating, perfectly adaptable for the right theatre piece but by no means 'black box', bar at rear                     | 1,700 CZK (61 EUR)                      |
| Museum of Alchemists        | 35                | Seating on benches and stools around tables, raised stage, one entrance at back of stage.   | 1,600 CZK (57 EUR)                      |
| Kavárna 3+1                 | 20                | Very intimate back room in an arts bar. Very limited lighting and sound, cabaret style set up.                                      | 800 CZK (29 EUR)                        |

**NB this table should be treated as a rough guide as all the venues have not yet been confirmed. Prague Fringe will liaise with you on the appropriate venue on consideration of the requirements of your production.**

The participation fee is a payment towards:

- **Venue costs** (venue hire etc.)
- **Up to 4 hours initial get-in/rehearsal time depending on venue**
- **Basic general cover lighting and sound rig** (where applicable)
- **Festival Brochure** – the show will be included in the Fringe programme
- **Generic Marketing**
- **Generic Administration**
- **Door split** - Companies will take a 60% cut of the door sales (minus any central box office handling fees (usually 10 CZK (0.36 EUR) per ticket) and 15% VAT), which will be transferred into your account before the end of June once all ticket sales are accounted for.
- **Time Slots** - are 90 minutes each, broken down into 60min (maximum) show time and 20 min get-in and 10 min get-out.
- **Ticket Prices** – In 2014, ticket prices were 150 CZK (cca 5.40 EUR) with a student discount and frequent Fringe discount of 100 and 120 CZK (cca 3.60 - 4.30 EUR) available. We reserve the right to introduce special ticket prices and offers to boost overall sales on the first weekend of the festival – specific details to be included in the final contract issued in December.

Other useful information

- **Accommodation** - Prague Fringe Festival **does not** provide accommodation for incoming companies. We are developing a relationship with a good quality apartment partner who will have a range of apartments available at unbeatable prices – more info on this will be provided on signing the contract. We also recommend [www.fusionhotels.com](http://www.fusionhotels.com), which is located in the centre of the city and offers a range of rooms (from hostel dorms to deluxe suites) at competitive rates.
- **Transport to Prague** - Prague Fringe **does not** cover the cost of any travel expenses to the festival. We recommend [www.skyscanner.net](http://www.skyscanner.net) as a way of finding the cheapest option of flying to Prague.
- **Other costs** -The general cost of living is still cheaper in the Czech Republic than in other EU countries. Some examples follow - 0.5 litre of beer or cup of coffee - 30 CZK (1 EUR). Main course in an average priced restaurant - 150 CZK (5.40 EUR). Further information available also here: [www.expatis.com/costofliving](http://www.expatis.com/costofliving)
- **Guides to Prague** - Prague Fringe recommends the Time Out guide to Prague. [www.praguepost.com](http://www.praguepost.com), [www.expats.cz](http://www.expats.cz) and [www.prague.tv](http://www.prague.tv) are other good sources of what's on information.



**14<sup>th</sup> PRAGUE FRINGE FESTIVAL Friday 22nd - Saturday 30th May 2015**

## **HOW THE FESTIVAL WORKS: TECHNICAL AND PRODUCTION**

### **Technical time and Rehearsals**

Most venues open up to six shows in two days of rehearsals; this means preparation time is very restricted. We advise that this only allows time for technical preparation and maybe one run-through, we strongly recommend that you have at least previewed your show before arriving in Prague.

We generally allocate: four hours of technical/rehearsal time to theatrical productions; one or two hours to soundcheck musicians; 15 – 30 minutes for stand up comics. If you are a musician or comic with a theatrical show please let us know and we will arrange longer. Companies that arrive in Prague earlier often have better preparation time. We can sometimes find extra rehearsal time, however we will have to charge you for theatre rent and staff.

### **Lighting and Sound**

Prague Fringe Festival (PFF) will rig and focus a basic warm and cold lighting general cover which is shared with all companies; this CANNOT be refocused. We also rig one profile (leko) at the rear of the venue that CAN be refocused and coloured by each company. If you require additional lighting we can hire in extra equipment at your expense\*.

Past experience has shown that allowing companies to share specials is not practical. If you wish to bring your own equipment please inform us in advance.

*\*Please note that Kavárna 3+1 does not have any lighting*

All venues (except Kavárna 3+1) have a basic sound system suitable for the venue, which includes at least one CD player and limited cabled microphones; we can also plug in laptop/MP3s.

Kavárna 3+1 has a basic domestic sound system with no microphone.

### **Electricity**

The Czech Republic uses 220v. Plugs are North European 2 pins plus earth (Schuko CEE7/5). It is generally easier to purchase adaptors outside the CR than within.

Please note North American equipment will need either a transformer (difficult to obtain and expensive to hire in the CR) or be multi voltage – most laptops and data projectors have this facility but please check.

### **Sets**

Most venues have limited storage for sets so it is important to let us know your set storage size.

You should be able to set up your show each day within 20 minutes and strike it within 10 minutes. If you need longer please let us know in advance. At the end of the festival you will need to remove your set on the final night, if this is not possible we will need to make arrangements in advance. You cannot 'abandon' anything in Prague but either need to remove it or arrange disposal.

### **Fringe Technicians**

All Fringe Technicians are English-speaking and will be your primary contact during the festival.

Fringe Technicians will help you prepare during your initial fit up and technical rehearsals, including programming the lighting board. During the festival they will co-ordinate, and help with, changes between shows. They also work alongside the Festival Assistants (who run the front of house and box office operations) to ensure that the audience is let in and that shows start on time.

Fringe Technicians can also operate your shows, however PFF will charge you (300 CZK) per show for this.

PFF requires for safety reasons that there is a person at the control position at all times during the show. Therefore if you do not provide an operator we will supply, and charge you 300 CZK for, an operator, *even if there are no cues*.

NB: Kavárna 3+1 does not have a Fringe Technician so is the only exception to this rule.

### **Do I need to bring a Technician?**

Fringe Technicians can operate sound and lighting, however PFF will charge you a fee for this per show (see above).

If you have a complex show it may be better to bring your own operator, please remember the Fringe Technician will only have a short time to learn your show and may be working in a second language.

**Sourcing Items in Prague**

PFF does not have the staffing to find props or set for you in Prague, however we may be able to advise you where to start looking. Most of the venues have basic items such as chairs and tables, but only a limited stock. Please let us know what you are looking for and we will do our best to help. Czech theatres do not carry such items such as stage braces, stage weights, masking flats, etc. Also most theatres do not carry a wide range of tools. If you need specific items we recommend that, at least one of your team, arrive a few days early.

**Technical Questionnaire**

Part of the application form is a technical questionnaire. We appreciate that your show and technical requirements may change between now and the festival but this form gives us a chance to assess if your performance is suitable for the festival and where best to place the show. About a month before the festival we will ask you to give us any updates. You will be given the opportunity to attach any photos, drawings and ground plans that you feel appropriate.

## Divadlo Na Prádle

(dee-vadlo na praad-ley)

Nearest Metros - Malostranska and Anděl (20 min walk)

Trams no. 12,20,22 to Újezd (2 min walk)

### Address

Besední 3 Malá Strana, Praha 1

### Website

<http://www.divadlonapradle.cz/>

<http://www.divadlonapradle.cz/divadlo.php>

Well-equipped, modern, black box theatre. With end-on raked seating as well as a balcony. The same building houses the Kavárna space.

### Seating

140 capacity. Raked end-on seating, with balcony above.

### Stage dimensions

5.82M(width) x 6.00M (depth). 4.3M (height) from stage to LX bars. A moving gantry can reduce the stage depth to approx 3M. Please do not assume you can open the US curtains as sets are sometime stored here.

Limited (non flying) lighting bars above available to hang items.



Stage showing gantry with curtains open

### **Stage surround**

Rear of stage are black drapes with black painted side walls. Downstage entrances with black soft masking. Entrances onto stage mid and up stage on either side. Run round through dressing room at rear (or behind blacks dependent on position).

### **Gantry**

At the rear of the stage there is a movable gantry with black curtain hung below. It is possible to hang projection screens (not supplied), etc. from this.



Seating

### **Stage Floor**

Black wood

### **Sight lines**

Good from stalls and most of balcony. 12 overspill seats with restricted view.

### **Audience entrance**

Stalls, down wide stairs and through side of auditorium. Balcony from rear of balcony.



### **Set storage**

Limited, some on either side of stage and side of auditorium. Reasonable space at rear of auditorium, for easily carried objects. Good storage for costumes in dressing rooms.

Further storage is available in various locations around theatre for props etc. Some narrow or foldable set items can be stored behind the upstage blacks.

### **Access**

Either side of stage, SR only accessible via dressing room. Also access to auditorium and balcony from stage. Access for sets through auditorium down staircase

### **Dressing rooms**

2 large (male & female) with showers, toilets, mirrors etc. Access to Stage Right through Male dressing room.

### **Lighting**

Lighting board Strand GSX



### **Projection**

A small projector may be available hung centrally pointing US below the gantry. It is not practical to repoint or refocuss this projector during changeovers so we advise bringing your own if you need specific focussing.

The theatre does NOT have a projector cradle or screen a screen can be hired additional cost.

## Sound

Fixed speakers

Mixing desk Allen & Heath 24x6x8

2x CD (incl. recording)

2x MD

1x Cass

Limited mics etc. Please specify requirements



Stage left

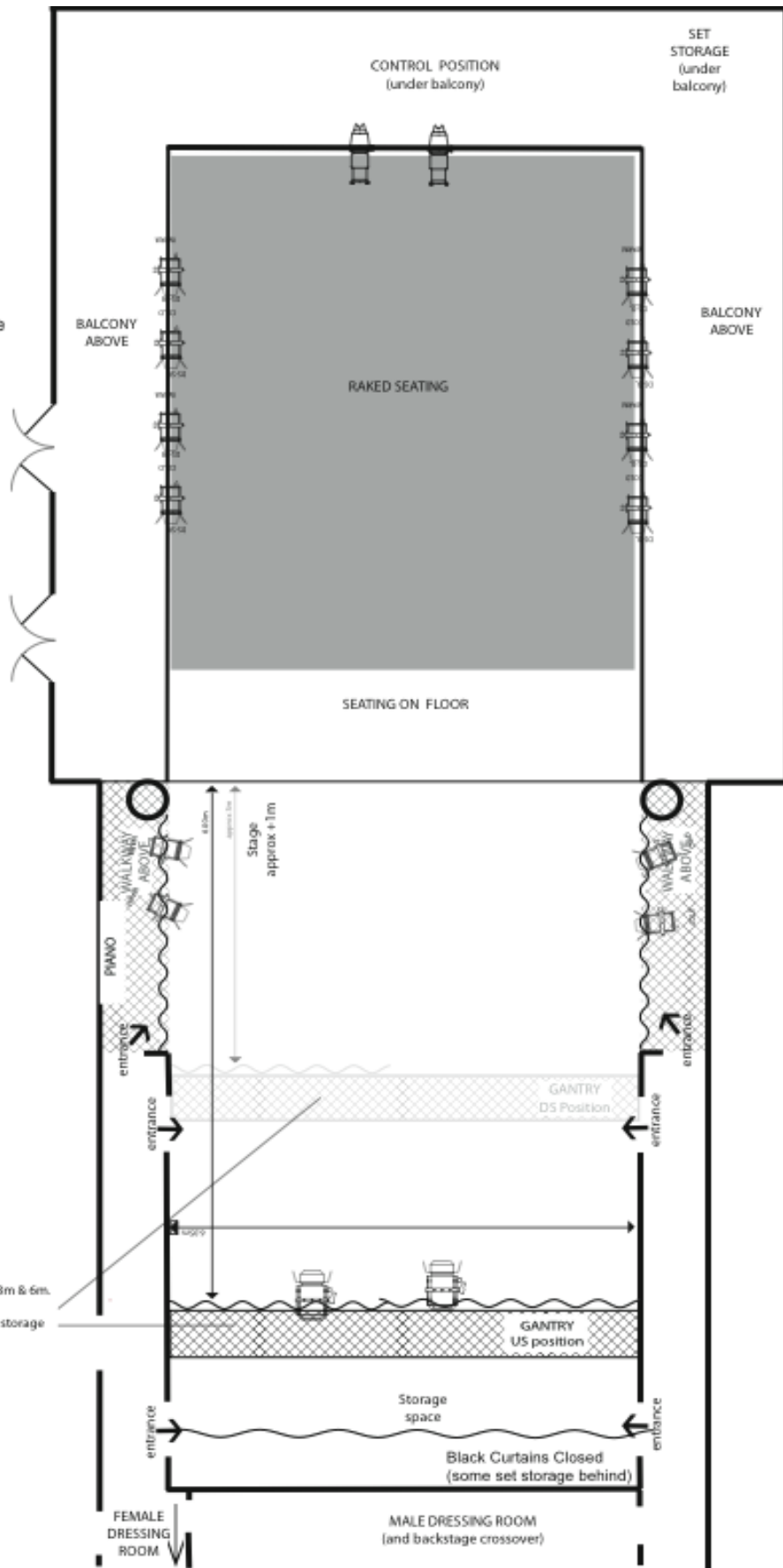


## DIVADLO NA PRADLÉ

(not to scale)

Lighting plan is indicative only.  
This plan is only designed to indicate the  
layout and size of the venue,  
if you need exact measurements  
please contact PFF

AUDIENCE  
ENTRANCE  
  
FOYER



# Malostranská beseda

(malo-stranz-ka bess-e-dah)

**Address:**

Malostranské náměstí 21, 110 00 Praha 1

Nearest Metro - Malostranská (five minute walk)

Trams - 12,20,22 to Malostranské náměstí (directly outside)

**Website:**

<http://www.malostranska-beseda.cz/en/club/programme>

Well known Prague music venue in a completely renovated building on one of the main squares in the Malá strana area near the famous Charles Bridge. The venue is on the first floor. It has it's own bar and large foyer area. Beseda becomes the Fringe Club after performances end.

**Seating**

A flat floor with loose seating in rows

**Stage Dimensions**

Approx 5m width x 3.5m depth

The stage is raised approx .7m with steps to the auditorium

**Site Lines**

Good

**Access**

On first floor, with lift access

Vehicle drop off point in front of venue, no waiting, paid car parking nearby.

**Dressing Rooms**

At rear of stage, with separate toilet and shower facilities

**Audience Entrance**



The audience enters SL from a large bar/foyer area. There are no steps from street to the theatre using the lift.

### Furniture

This venue has no furniture store. You can borrow furniture from the bar which includes chairs, round bar tables and tall bar stools.



### Sound

Beseda is a regular music venue with good modern PA for its size

Mixer Soundcraft GB4 x24 Channels

Speakers Martin Audio F15 x 4

Martin Audio F12 X 1

Monitors JBL

Selection of effect processors/Gates and Graphic equalizers (precise details on request)

DI boxes Behringer DI100

Selection of Sure/AKG microphones incl SM58s and instrument mics



**Backline**

Beseda does NOT have any instruments (apart from piano), combo amps, etc. It does have stage monitors.

**Lighting**

Beseda is designed primarily as a music venue and the lighting equipment reflects that

LX board GLP Light Operator 2448

2 x GLP YPOC 250 Moving heads (Fresnel)

Hazer/ Smoke machines are NOT part of the standard equipment, but can be hired in.

**Piano**

Grand Piano is available as part of rent.

**Google Maps – Copy and paste to see map**

[http://maps.google.com/maps?hl=en&client=safari&rls=en&q=malostranska+beseda&bav=on.2,or.r\\_gc.r\\_pw.,cf.osb&biw=1182&bih=1012&um=1&ie=UTF-8&sa=N&tab=w](http://maps.google.com/maps?hl=en&client=safari&rls=en&q=malostranska+beseda&bav=on.2,or.r_gc.r_pw.,cf.osb&biw=1182&bih=1012&um=1&ie=UTF-8&sa=N&tab=w)

# Malostranská beseda

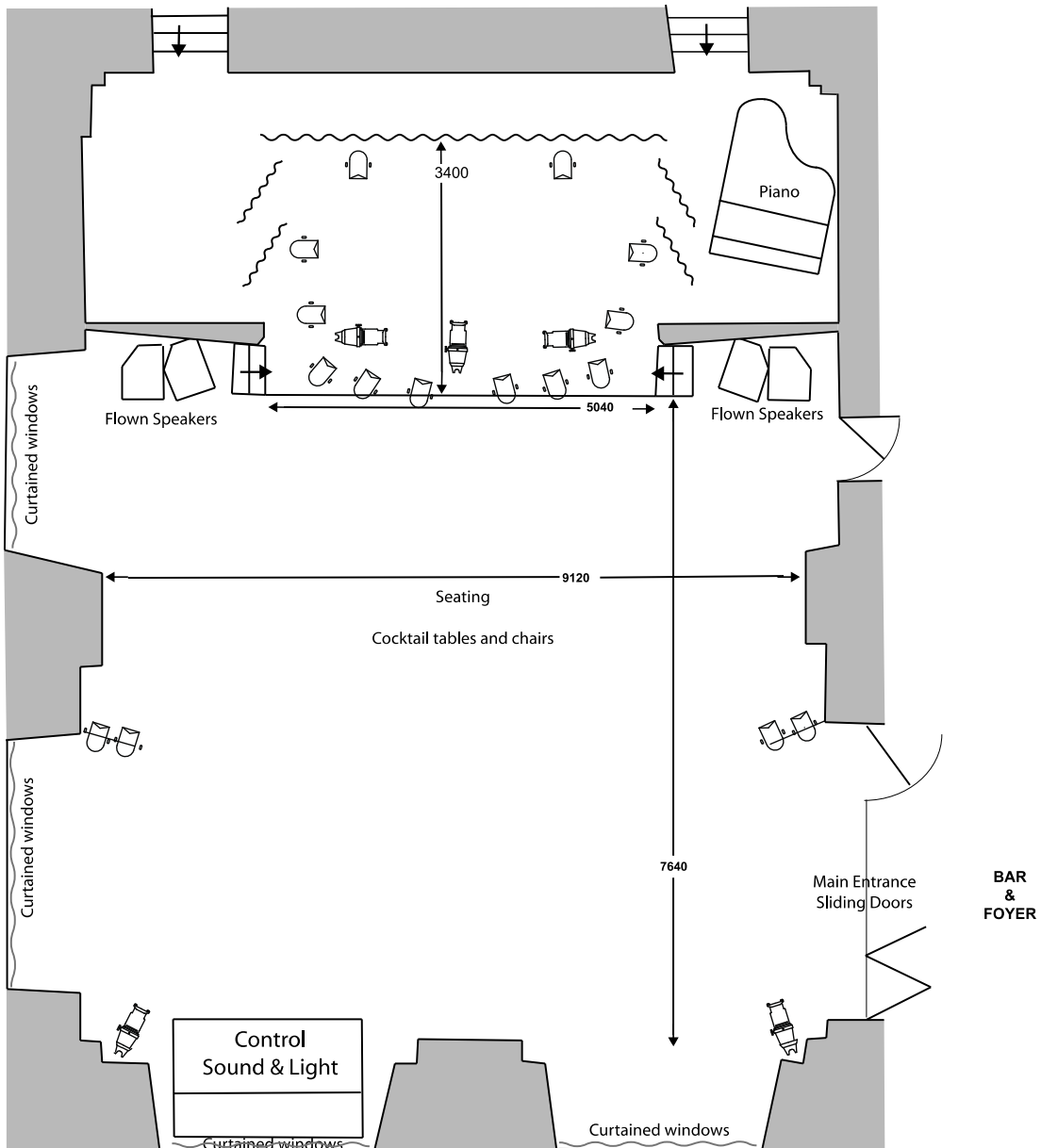
(not to scale)

This plan is only dsigned to indicate the layout and size of the venue, if you  
need exact measurements please contact PFF

Lighting is indicative please consult PFF for updated lightitng plan



Dressing Room



Black drapes



Profile (S4)



Par Can

© Giles Burton @ Prague Fringe 2013

# Divadlo Inspirace

(Dee-vad-lo Ints-pi-rat-say)

## Address

Malostranské náměstí 13 Malá Strana, Praha 1  
 Nearest Metro - Malostranská (seven minutes walk)  
 Trams - 12,20,22 to Malostranské náměstí (two minutes walk)

## Web Site

<http://www.hamu.cz/ucelova-zarizeni/divadlo-inspirace>

Divadlo Inspirace is a basement theatre just off a busy square below Prague Castle at the heart of the north side of the river. It has an arched ceiling and end on raked seating. There is also a basement bar. It is well equipped for its size.

**Please note:** *This venue has undergone extensive re-development during 2014, so we expect significant changes to this information.*

## Seating

60. End on, gently raked.

## Stage Dimensions

Depth 5.50M,  
 Width 6.50M,  
 Height (at centre) 4M, arching down to 2.50M

## Stage Floor – tbc for 2015

Vinyl dance floor – so limitations on anything that might damage it.







### **Stage Surround – tbc for 2015**

Black curtains and legs creating black box with (narrow) cross-over and wings. SR wing space is limited, SL leads off to well equipped dressing rooms, etc. The blacks can be quickly removed to reveal the bare walls. The stage is accessed from the right side from the bar space.

### **Site Lines**

Good. Though limited view of stage floor due to the gentle rake of seating so floor work is not recommended.

### **Audience Entrance**

Downstairs, through bar. Single entrance to theatre at rear, Auditorium right. Wheelchair stair lift.

### **Set Storage**

Space in the back of the theatre with narrow access, we can also store a small number of larger items outside the performance space in a corner of the bar area. Everything must be carried down stairs for get in and out.

### **Performers Access**

From SL, Crossover behind black curtains. Actors can also make way from backstage to audience entrance and come through auditorium, though opening door may disturb some audience members.

### **Dressing Room – info tbc for 2015**

Separate rooms for men and women with toilets and showers backstage.

### **Lighting/ Sound**

The lighting and sound set up is still to be confirmed for 2015 however we expect a good range and quality of equipment. Prague Fringe will rig and focus a General Cover and there will be a limited range of extra lighting to use as special.

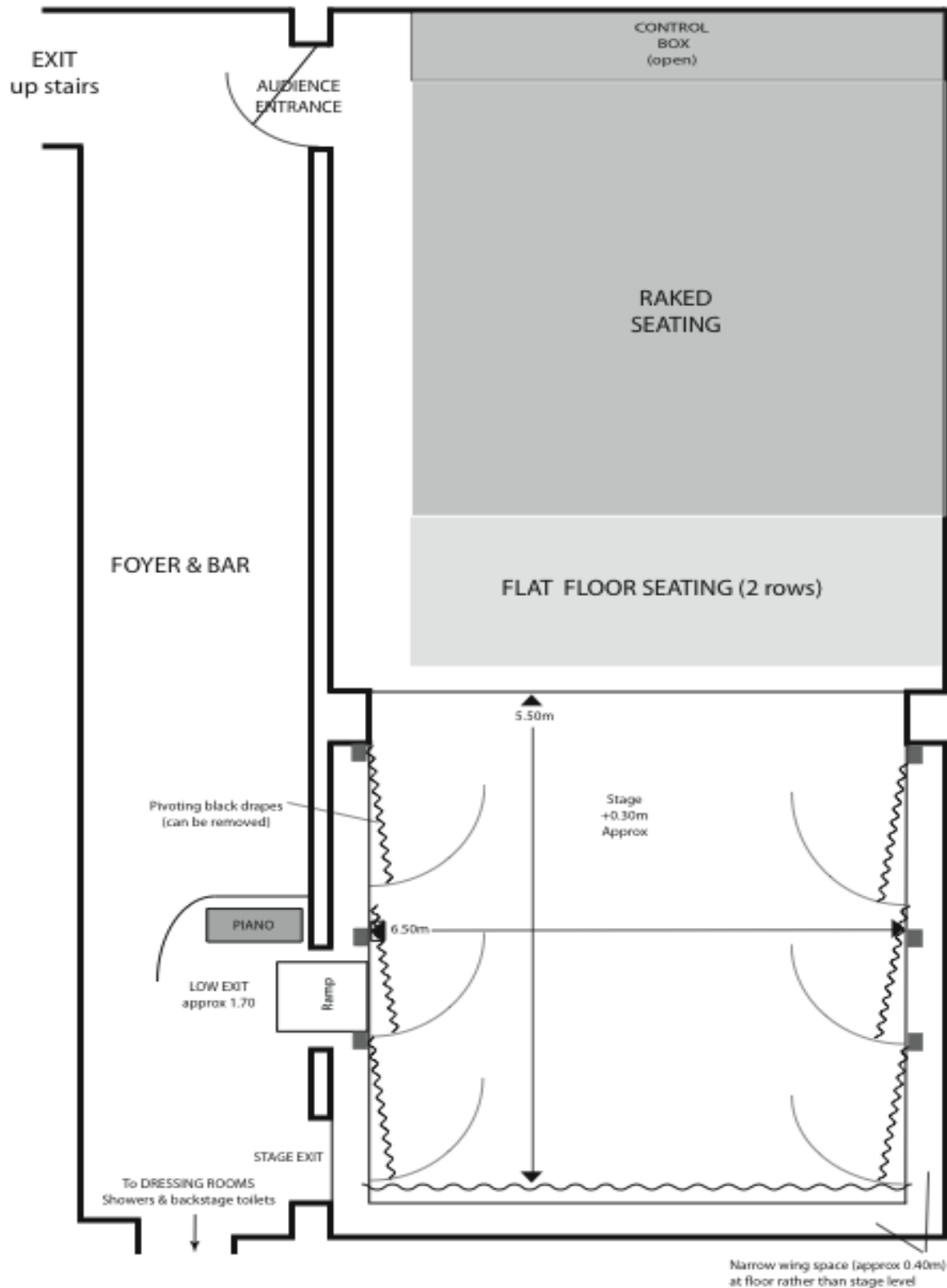
### **Google maps – copy and paste this link to see the map**

[http://maps.google.com/maps?hl=en&client=safari&rls=en&q=malostranska+beseda&bav=on.2,or.r\\_gc.r\\_pw.,cf.osb&biw=1182&bih=1012&um=1&ie=UTF-8&sa=N&tab=wl](http://maps.google.com/maps?hl=en&client=safari&rls=en&q=malostranska+beseda&bav=on.2,or.r_gc.r_pw.,cf.osb&biw=1182&bih=1012&um=1&ie=UTF-8&sa=N&tab=wl)

# DIVADLO INSPIRACE

(not to scale)

This plan is only designed to indicate the layout and size of the venue, if you need exact measurements please contact PFF



# A Studio Rubín

(aa studio roo-been)



A Studio Rubín is a basement theatre just off a busy square below Prague castle at the heart of the north side of the river. It is a black painted box with arched ceiling and end-on raked seating. There is a separate 1<sup>st</sup> floor café/bar. Rubin is a classic “fringe” space.

## Stage Dimensions

Depth 4.40M (rear wall is angle so SR is approx 0.6M deeper)

Width 5.85M

Height 3.50M in centre, sloping to 2.50 at sides.



*Stage (without Vinyl Dance floor)*



## Seating

60. End on. Loose chairs on raked rostra

## Stage Floor

Vinyl dance floor over ceramic. There is a step down from the dressing room to the stage floor of approx. 30cm.

## Site Lines

Good, though limited to stage floor due to gentle rake of seating.

## Stage Surround

Black painted arched performance space, rear wall angled so SR is approx. 0.6M deeper than SL  
The dressing room is through a curtained door USR with another connected opening USL and through bar to audience door MSL. There are no blacks or masking available.

## Audience Entrance

Down stairs, through bar, the entrance to theatre is mid Stage Left and across playing area to seating bank. Late-comers (if admitted) have to cross stage.

## Access

Down one steep flight of steps. All equipment has to be carried down these steps.

## Set Storage

Very limited in dressing room, we can also store a small number of larger items outside the performance space in a corner of the bar area.

## Furniture

This venue has no furniture store. You can borrow chairs and tables from the bar area however there is only one design.

## Performers Access

As per audience and from two doors (SL & SR) at back of stage.

## Dressing Room

Single communal room with shower, this leads directly onto the stage area, toilets are shared with the audience, in bar.

## Lighting

Tritton LT24 memory desk (24 Way) with 12 submasters

24 x 1k dimmers

We will provide a basic standing rig to which very limited specials can be added. This rig is largely made up of pebble convex instruments.



## Sound

Behringer Eurorack MX1X1602 8 into 2 Mixer

Channels 7&8 are stereo for playback

1 x MD player

1 x CD Player

4 x SM 58 (equivalent) vocal Mics 2x mic stands

3x mic tie lines from stage (SR) to control box

Technical equipment is subject to change and is for illustration only.

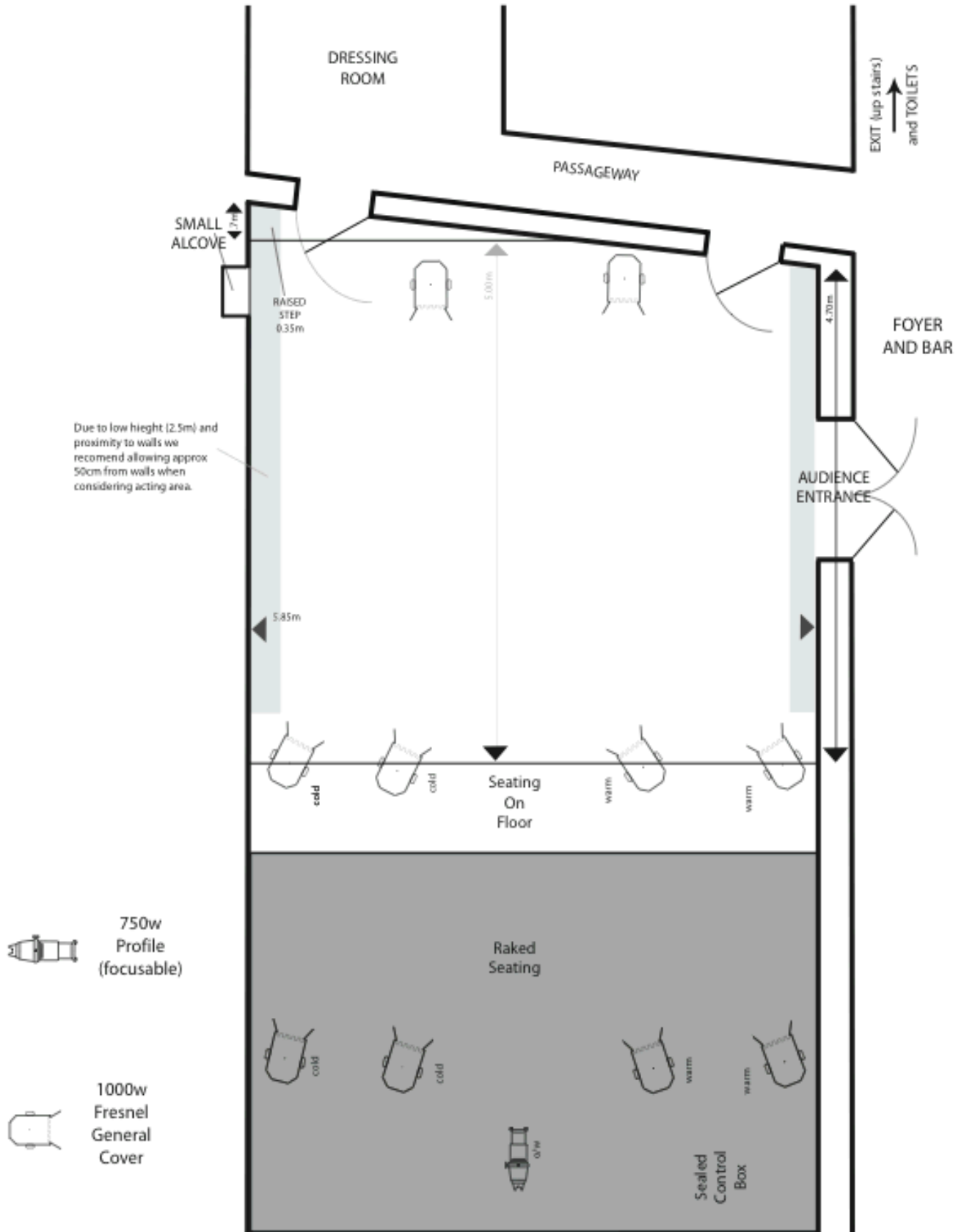
## Website

[www.astudiorubin.cz/](http://www.astudiorubin.cz/) (in Czech only)

# A STUDIO RUBIN

(not to scale)

Lighting plan is indicative only, an updated plan will be issued shortly before the festival.  
This plan is only designed to indicate the layout and size of the venue, if you need exact measurements  
please contact PFF



# Divadlo Kampa

(dee-vad-lo Kam-pa)

## Address

Nosticova 2a Malá Strana, Praha 1  
Nearest Metro - Malostranska (10 mins walk)  
Trams - 12,20,22 to Hellichova (4 mins walk)

## Website

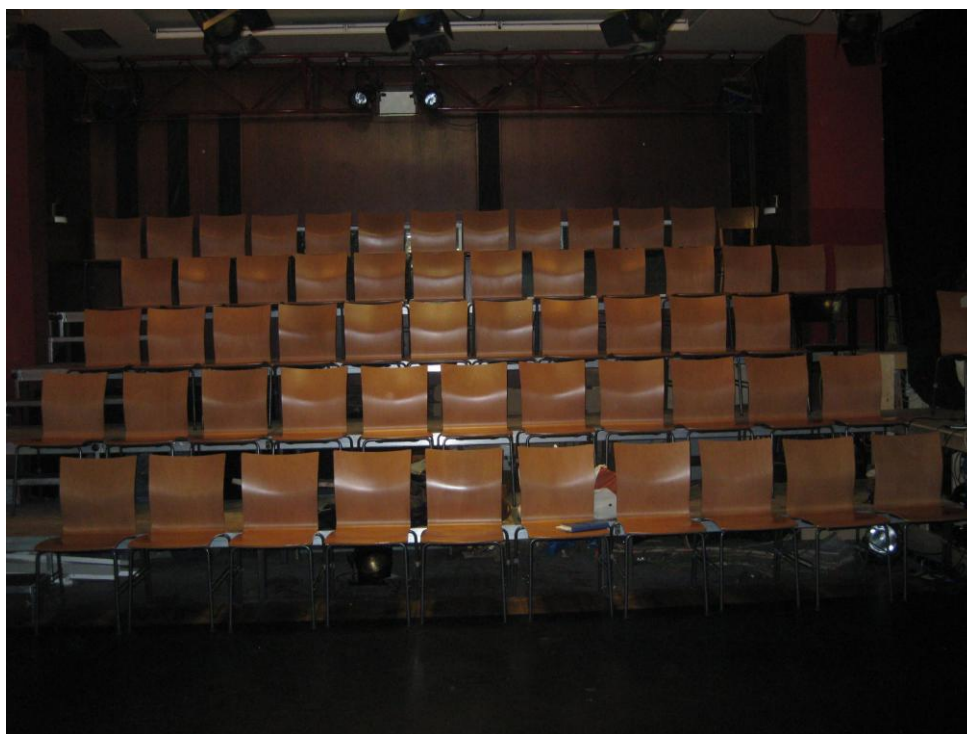
<http://www.divadlokampa.cz/> (in Czech)  
A 3D walk through is here <http://www.divadlokampa.cz/o-divadle-kampa>

End on black box theatre with raked seating. Stage is at floor level. This theatre is on the first floor above a restaurant

## Seating

58 individual seats. End on.

Can be upped to 68 by adding a second row on the floor – though this does effect sight lines and lighting.



## Stage Dimensions

Width 6.30m  
Depth 5m (from rear drapes to audience)  
Height to lower cord of lighting truss 3.3m





### **Stage Floor**

Vinyl dance floor – so limitations on anything that might damage this.

### **Stage surround**

Black drapes on rear and Stage Right

Stage Left wall is side of theatre

Rear drapes can be opened to reveal fixed projection screen

### **Site lines**

Good

### **Access**

Down Stage Right wing

Access around rear of auditorium and through audience door (black drape inside door)

### **Audience/ load in entrance**

From ground level up flight of stairs and through double door Stage Left. Wheelchair stair lift available.

The location of the audience entrance means latecomers are very noticeable.



Stage Left with audience door

**Set Storage**

Storage is limited in 'corridor' Stage Right and very limited in dressing room.

**Furniture**

The venue has a limited selection of chairs and tables which may be available.



Stage Right

**Dressing Room**

Small room at rear of stage, toilets and showers shared with audience upstairs. The dressing room is not accessible until the previous show has finished

**Lighting**

Basic trussing above stage and at rear of auditorium, limited lighting stock.

Fixed two colour general cover with two specials (profiles) that can be refocused for each show.

Lighting desk, Titan 24 way with 12 submasters. Programmable with individual states.

**Sound**

1 x CD

1x DVD/CD

Basic selection of Microphones

Behringer sound desk, 4 mono and 4 stereo inputs into Stereo output.

**Video**

Projector fixed in grid and focussed on screen at rear of stage. This cannot be moved.

**Google Maps**

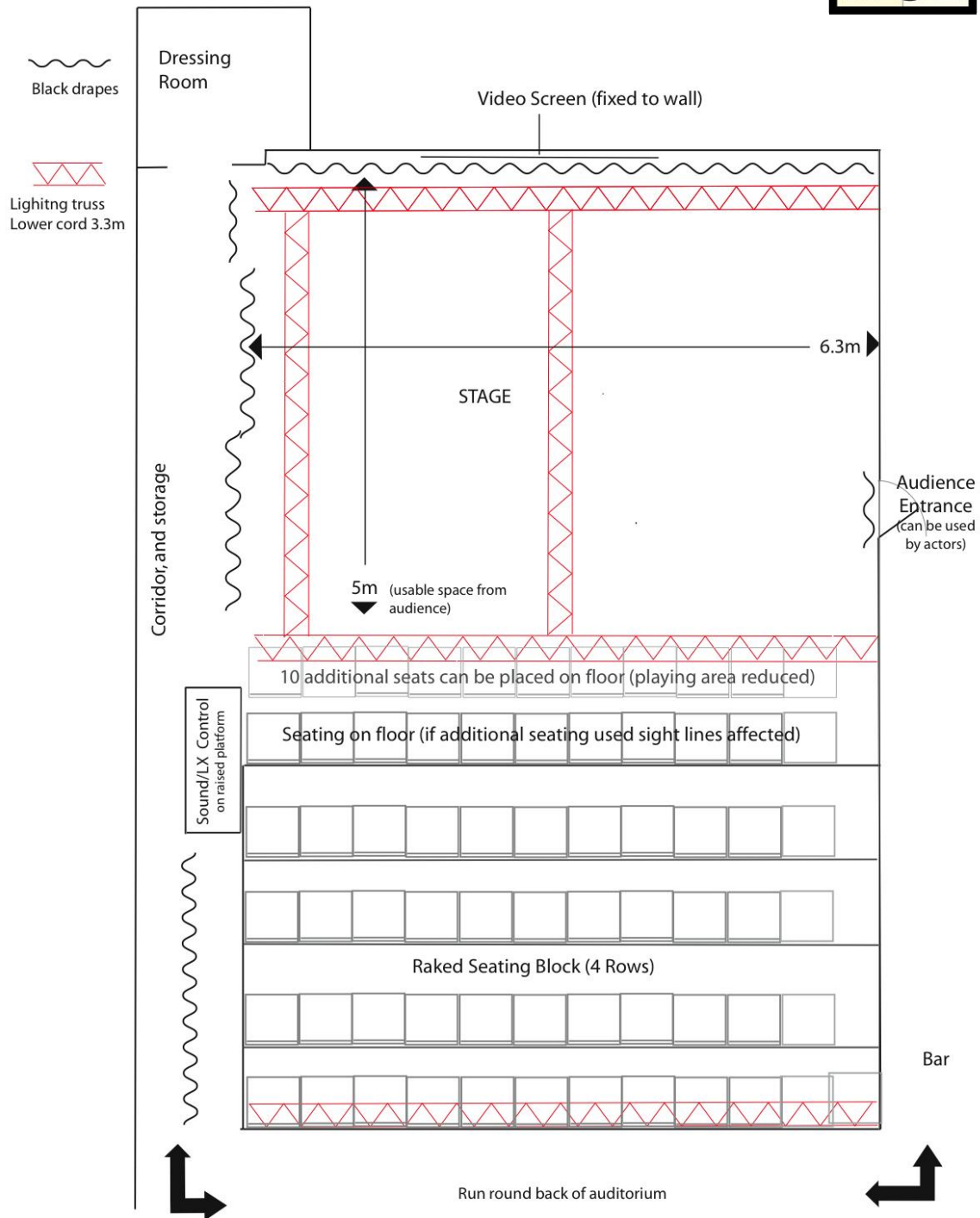
[http://maps.google.com/maps?hl=en&client=safari&rls=en&q=malostranska+beseda&bav=on.2,or.r\\_gc.r\\_pw.\\_cf.osb&biw=1182&bih=1012&um=1&ie=UTF-8&sa=N&tab=wl](http://maps.google.com/maps?hl=en&client=safari&rls=en&q=malostranska+beseda&bav=on.2,or.r_gc.r_pw._cf.osb&biw=1182&bih=1012&um=1&ie=UTF-8&sa=N&tab=wl)



# Divadlo Kampa

(not to scale)

This plan is only designed to indicate the layout and size of the venue, if you need exact measurements please contact PFF



# Divadlo Na Prádle – Kavárna

(Dee-Va-Dlo Na Praad-ley Ka-vaar-na)

## Address

Besední 3 Malá Strana, Praha 1  
Nearest Metros - Malostranska and Anděl  
Trams no. 12,20,22 to Újezd

Website - <http://www.divadlonapradle.cz/kavarna.php>

A flexible cabaret space with an informal gallery feel. A lower performance and audience area and an upper bar/audience area. The bar can either be open or closed during performance. Excellent for small scale music or theatre shows and good for audience interaction. Basic lighting and reasonable sound for room size.

The walls are likely to have art exhibits.

The Kavarna space is part of Divadlo Na Prádle complex.



## Seating

50 seats. Most on lower level around tables, some seating arranged in conventional rows. Raised level with one or two rows, possibility of standing at bar.

## Stage Dimensions

2M deep x 6M width, 0.6m height. There are no wings or offstage area



*From Stage*

### **Stage Floor**

Wooden rostra floor raised 60cm.

### **Stage Surround**

**White walls** with black drapes behind stage (note the walls have been repainted since these photos were taken).

### **Site Lines**

Good except to floor.



### **SR Stairs**

**Please note these stairs lead to a garden, however there is no other exit from here,**  
so we do not recommend using this as an entrance

### **Audience/performers entrance**

Down steps from rear of auditorium.

### **Set storage**

Limited in dressing room some distance from stage and up small flight of stairs.

### **Dressing room**

No dedicated dressing room. Instead large shared room which doubles for storage and some office. Toilets shared with audience, showers available in main stage dressing rooms.

**Lighting**

Very basic, warm/cold wash plus two focusable profiles on stands. Due to layout it is not possible to re-colour the wash.

**Sound**

Small but good quality system suitable for small theatre shows, Playback is from your laptop or iPod. CD is not available at this venue.

**Piano**

Useable, but rough bar quality. The piano cannot be moved.

**Black out**

Poor, some light leakage is inevitable. Please remember that some daylight will continue until 10pm during the festival time.

**Special Notes**

Kaverna and Na Pradle share an entrance and foyer area.

The bar at Kaverna can either be open or closed during the performance.

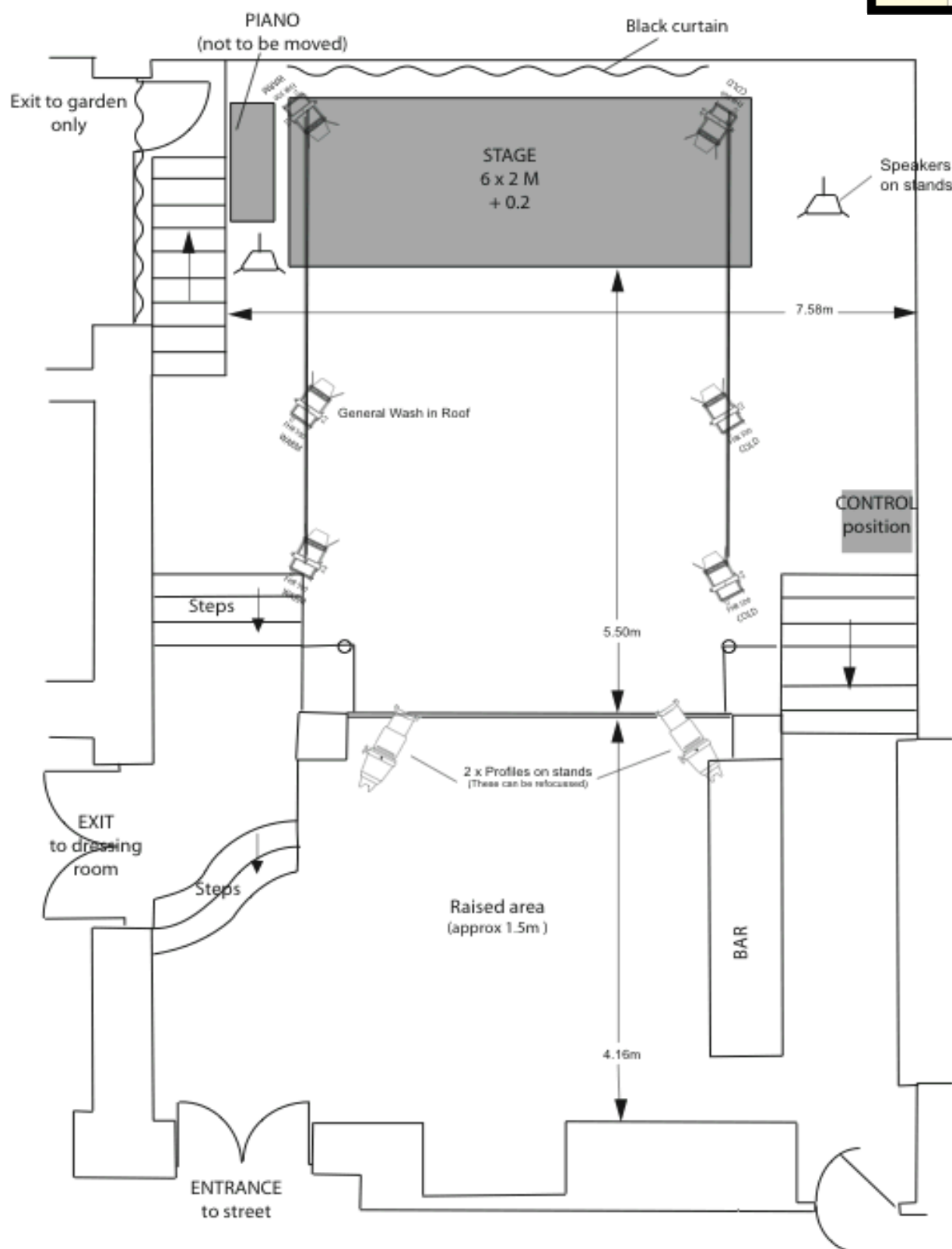
Postering is only allowed in specified areas at Na Pradle/Kaverna so please check with the fringe before putting them up.

**Google Maps – Cut and paste to see location**

[http://maps.google.com/maps?hl=en&client=safari&rls=en&q=malostranska+beseda&bav=on.2,or.r\\_gc.r\\_pw.,cf.osb&biw=1182&bih=1012&um=1&ie=UTF-8&sa=N&tab=wl](http://maps.google.com/maps?hl=en&client=safari&rls=en&q=malostranska+beseda&bav=on.2,or.r_gc.r_pw.,cf.osb&biw=1182&bih=1012&um=1&ie=UTF-8&sa=N&tab=wl)

# Na Pradlé Kavárna

Not To Scale  
This plan is designed to  
indicate the layout of the  
venue, specific details may  
change.





# Museum of Alchemists

## Address

Jánský vršek 312/8 Mala Strana

Nearest Metro – Malostranska; 12 min walk, Nearest Tram - Malostranské náměstí; 8 min walk.

The Museum of Alchemists lies below the castle a little uphill from other Fringe venues. The theatre is part of a museum which tells the story of John Kelley, a sixteenth century English alchemist who lived in the building. There is a bar beside the performance space. The museum also has a large and pleasant courtyard. Alchemy is suitable for small-scale music, poetry, storytelling, comedy, etc.



Front entrance



## Stage Dimensions

Height +40 cm

Depth 2.10m

Width (approx.) 3.10 curved edge

The stage is a 40cm step up from both the auditorium and dressing room.

**Seating**

35 on benches and stools around tables



NB. Photo taken from entrance doorway, stage is immediately to the right

**Stage Floor**

Wood boarding

**Stage Surround**

Black drapes – the drapes hang over a window and access door

**Site Lines**

Good

**Audience Entrance**

Through door from small foyer which leads into a bar or into the courtyard. There are no steps from street to the theatre.

**Piano**

There is a reasonably good piano next to the stage, it can be moved on the floor but cannot be lifted onto the stage.



### **Dressing Room**

Behind stage, reasonable size, no showers. Toilet is shared with audience but accessible from dressing room. Access from rear of dressing room leads to courtyard and from there to audience door.

### **Set Storage**

Limited, within dressing room or behind black curtains.

### **Lighting**

The lighting is fairly basic and consists of six LED PAR cans, which can give a range of colours. There is no back lighting. It is not possible to add extra lights to this rig.



LED controller



LED PAR



**Sound**

Alchemy is used for small scale music and has a basic “Samson” system consisting of:

2 x PG 48 microphones and stands

4 channel mixer (plus 2 x stereo line inputs for laptops/CD, etc.)

2 x Samson speakers

This system is suitable for spoken word, singers may wish to bring higher quality microphones.

**Website**

For Alchemy museum

<http://www.muzeumpovesti.cz/en>



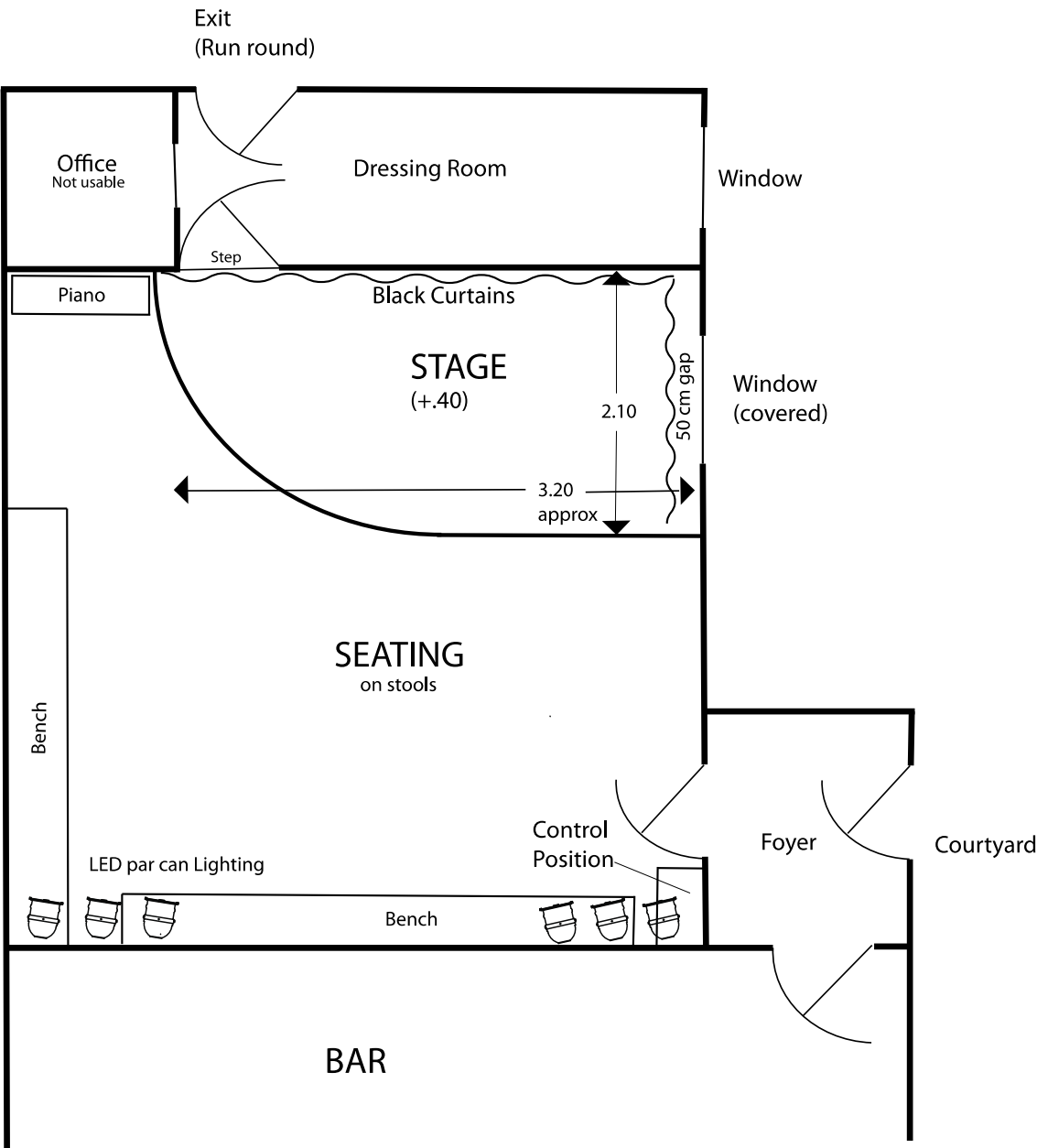
Please note that the curtains cover the window during performance.

**Google maps** – copy and paste this link to see map

<https://www.google.com/maps/place/Muzeum+alchymistů+a+mágů+staré+Prahy+%2F+Museum+of+alchemists+and+magicians+of+old+Prague/@50.0881835,14.3988025,21z/data=!4m2!3m1!1s0x0:0xdb89d5b5811f2fa5>

# The Museum of Alchemists

This plan is indicative only and not to scale



# Kavárna 3+1

(ka-vaar-na trzhi pluz yed-na)



## Address

Plaská 10, Praha 5 - Malá Strana

Nearest Metros - Malostranska and Anděl (both 15 min walk)

Trams no. 12,20,22 to Újezd stop (1 min walk)

**Kavárna 3+1** is a small bar on the edge of the Malá Strana district. The Fringe venue is a basically equipped room at the rear. This venue is very intimate and is suitable for poetry, storytelling and comedy. The performers are very much in a shared space with the audience.

The technical set up here is very basic. Lighting comes either from the overhead chandelier or small domestic spotlights, most companies work without sound.

The stage is a 2 x 1 m platform, 20cm high.

Art work may be on the walls and cannot be moved.

It is impossible to completely exclude noise from the bar at this venue.

**There is no Prague Fringe Technician at this venue, see note below.**

The bar is open to the public from 13:00 every day.

## Seating

20 on chairs set out in rows.

## Stage

There is a (20cm) raised platform 2m x 1m

## Entrance

For both audience and performers from bar.

There is a possibility of performers coming from storage area to side of room. There are no steps from the street to the theatre.

## Sound

A very basic system consisting of a mini jack near the door into which you can plug a laptop or MP3 player. It is not possible to mix sound or use microphones, etc. Many people simply use a portable player that they operate from stage.

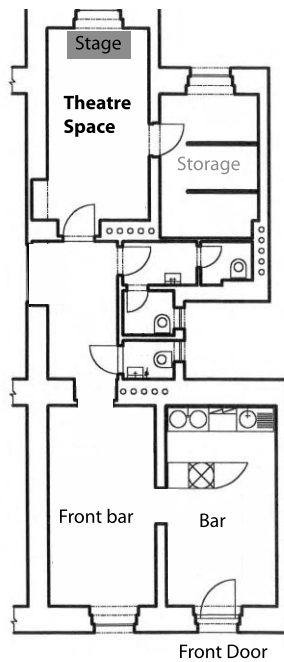
Please note there is no PFF operator available.

## Lighting

Very minimal. Domestic spot lighting to highlight stage with on/off switches on the lights. The main chandelier can be switched on/off. All the lights are simple on/off switched.



### 3+1 Layout of whole bar



#### Dressing Rooms

None. Performers use performance space before audience enter. It is possible to wait in the storage area. Toilets shared with audience.

#### Technician

This venue has no Fringe Technician so sound has to be operated by performer or your operator.

The FOH assistant can turn on/off the house chandelier. They cannot operate cues during the show.

#### Storage

Very limited space is available in the bar store. Anything large must be removed each night.





### **Rehearsals**

Please note that as this space has no technical equipment we only offer 2 hours of rehearsal time as standard in this venue.

### **Google Maps – copy and paste this link to see the map**

<https://www.google.com/maps/place/Kavárna+3%2B1/@50.0807705,14.4056107,20z/data=!4m2!3m1!1s0x0:0xbd8386f8618164b?hl=en>

# 3+1 (Tri plus Jedna)

Not to Scale



Seat layout  
indicative only



Seats (benchwood chairs)



Domestic spotlights  
(on/off only)



Overhead Chandelier

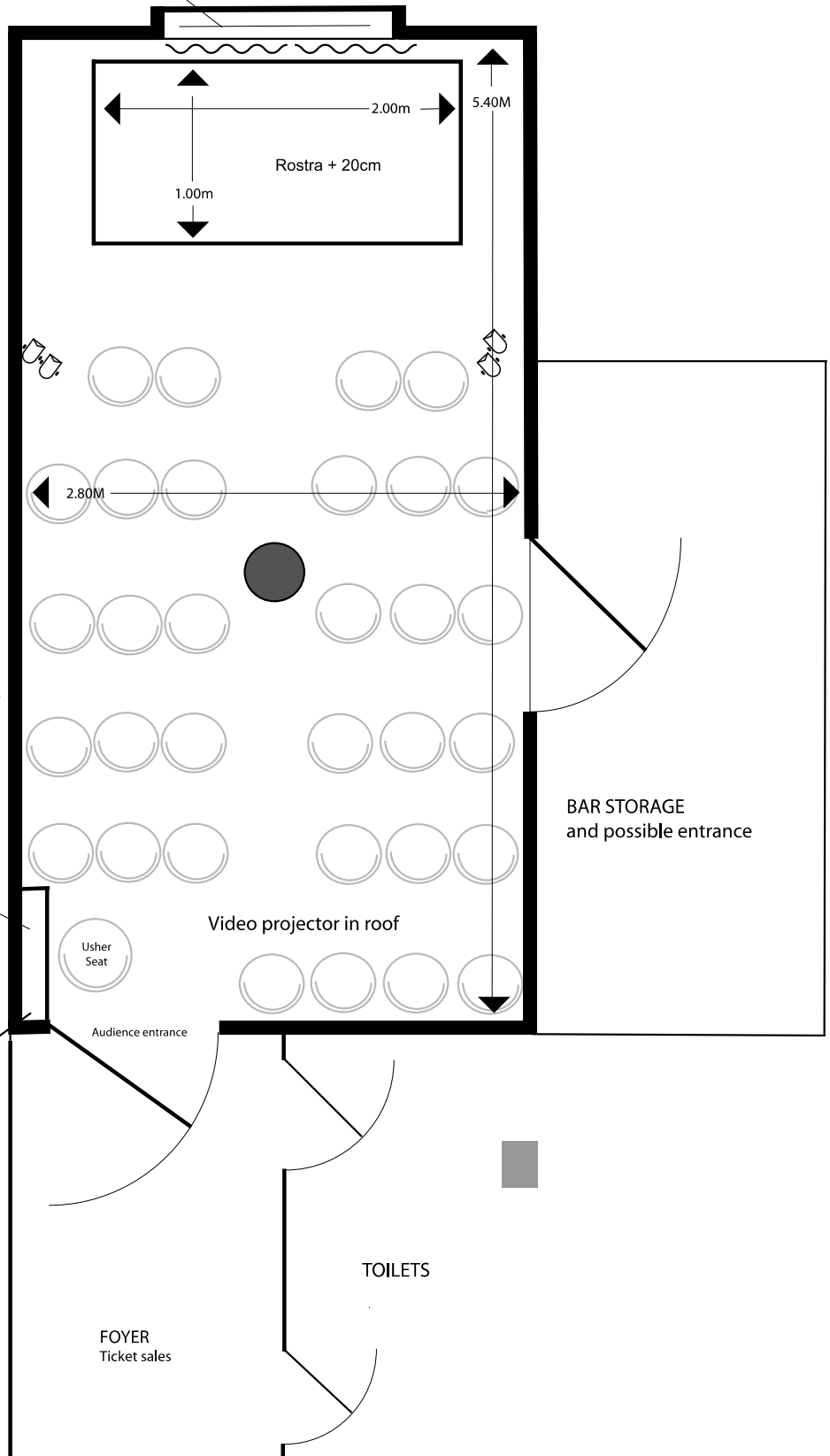


Black curtain  
in front of window

Mini jack plug point for  
laptop/MP3

Light switch (switched)

Roll up video screen Window - Black curtain in front







**14th PRAGUE FRINGE FESTIVAL Friday 22nd - Saturday 30<sup>th</sup> May 2015**

Thank you for taking the time to read the application information

If you are ready to submit your application please visit the  
**[ONLINE APPLICATION FORM](#)**

If you have any questions or problems with your submission, please contact us  
at

[info@fringe.cz](mailto:info@fringe.cz)

You can also find general information for participating companies (FAQs and handy tips for marketing your show) which might help you to decide whether or not you want to apply on our website at: <http://www.praguefringe.com/en/right/participating-groups/>

We look forward to receiving your application!

Team Fringe